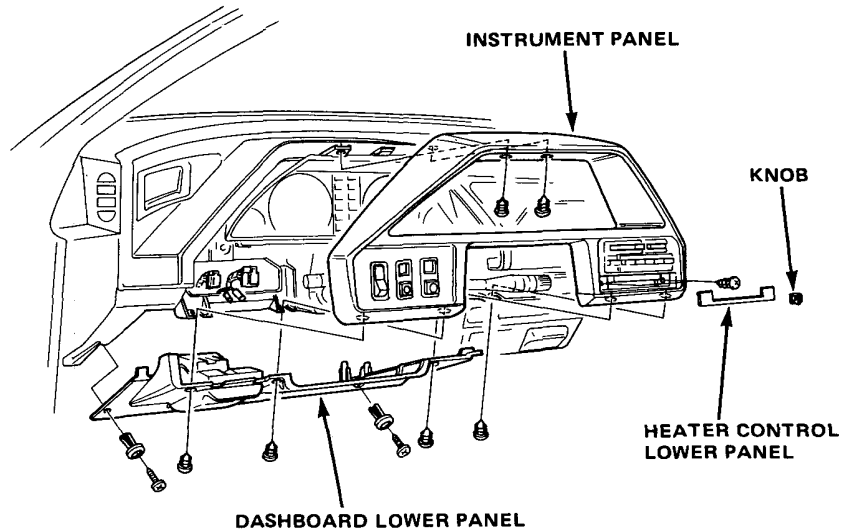
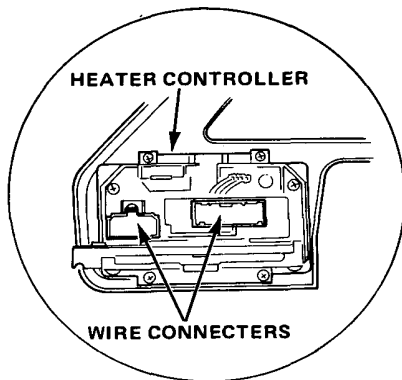


Instrument Panel

Removal (Coupe)

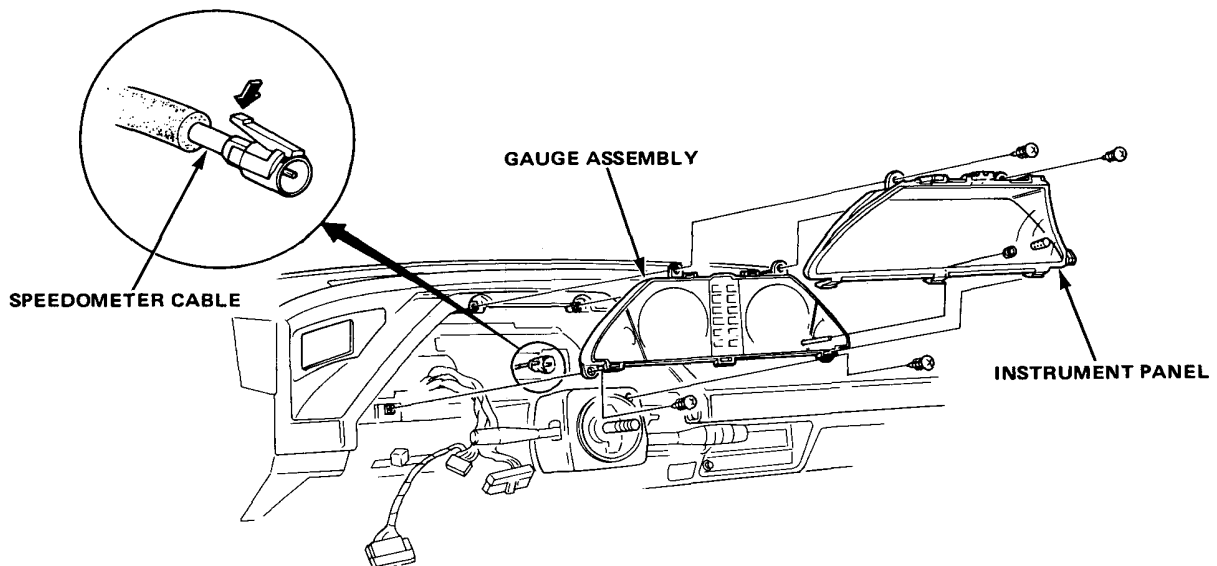
1. Remove the screws and clips, then remove the dashboard lower panel.
2. Remove the heater control knob and lower panel, remove the heater control mount screws.
3. Remove the upper screws.
4. Pull the instrument panel out, then disconnect the wire connectors.
5. Remove the instrument panel.



6. Remove the four screws, then lift the gauge assembly so you can reach the wire connectors.

CAUTION: Do not pull on the wires to disconnect connectors.

7. Disconnect the speedometer cable and wire connectors, then remove the gauge assembly.

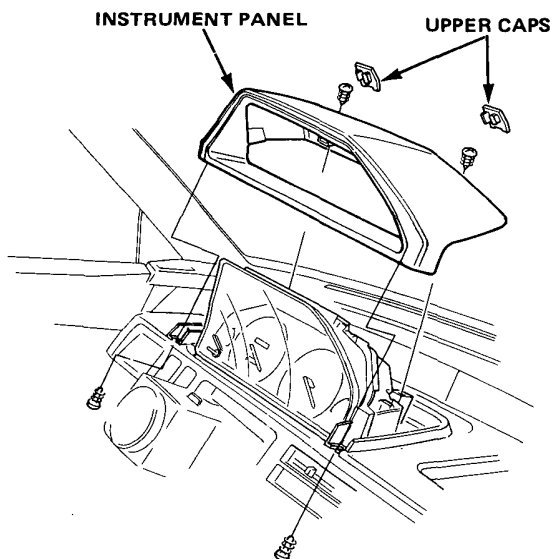




– (2D H/B, 4D, and 4D H/B)

2D H/B and 4D:

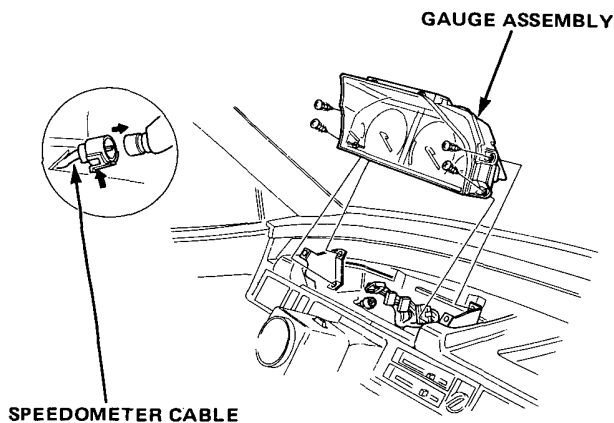
1. Remove the upper caps and the 4 screws.
2. Remove the panel.



3. Remove the four screws, then lift the gauge assembly so you can reach the wire connectors.

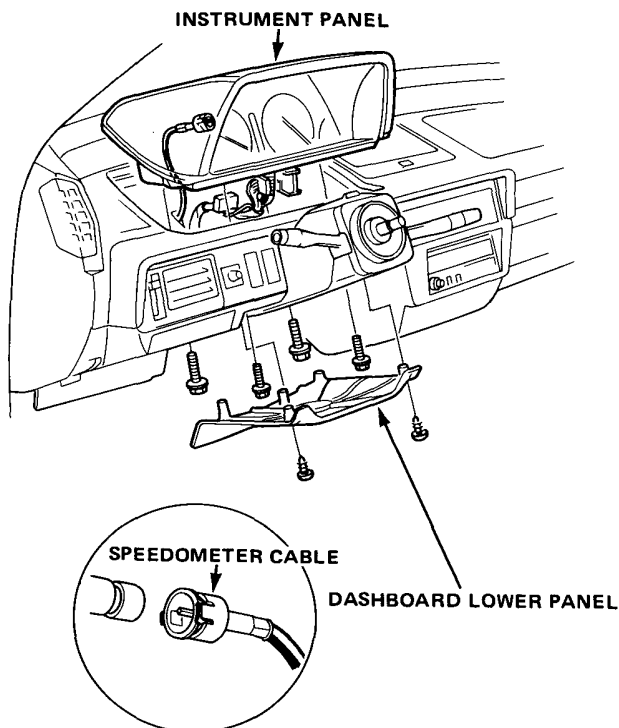
CAUTION: Do not pull on the wires to disconnect connectors.

4. Disconnect the speedometer cable and wire connectors, then remove the gauge assembly.

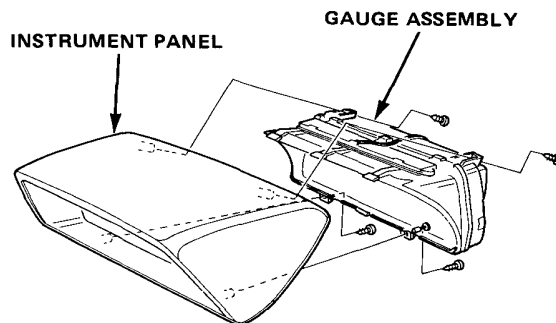


4D H/B:

1. Remove the screws and the dashboard lower panel.
2. Reaching from under the dashboard, remove the 4 bolts attaching the instrument panel to the dashboard, then disconnect the wire connectors and the speedometer cable.
3. Remove the instrument panel with the gauge assembly.



4. Separate the panel and the gauge assembly by removing the screws.

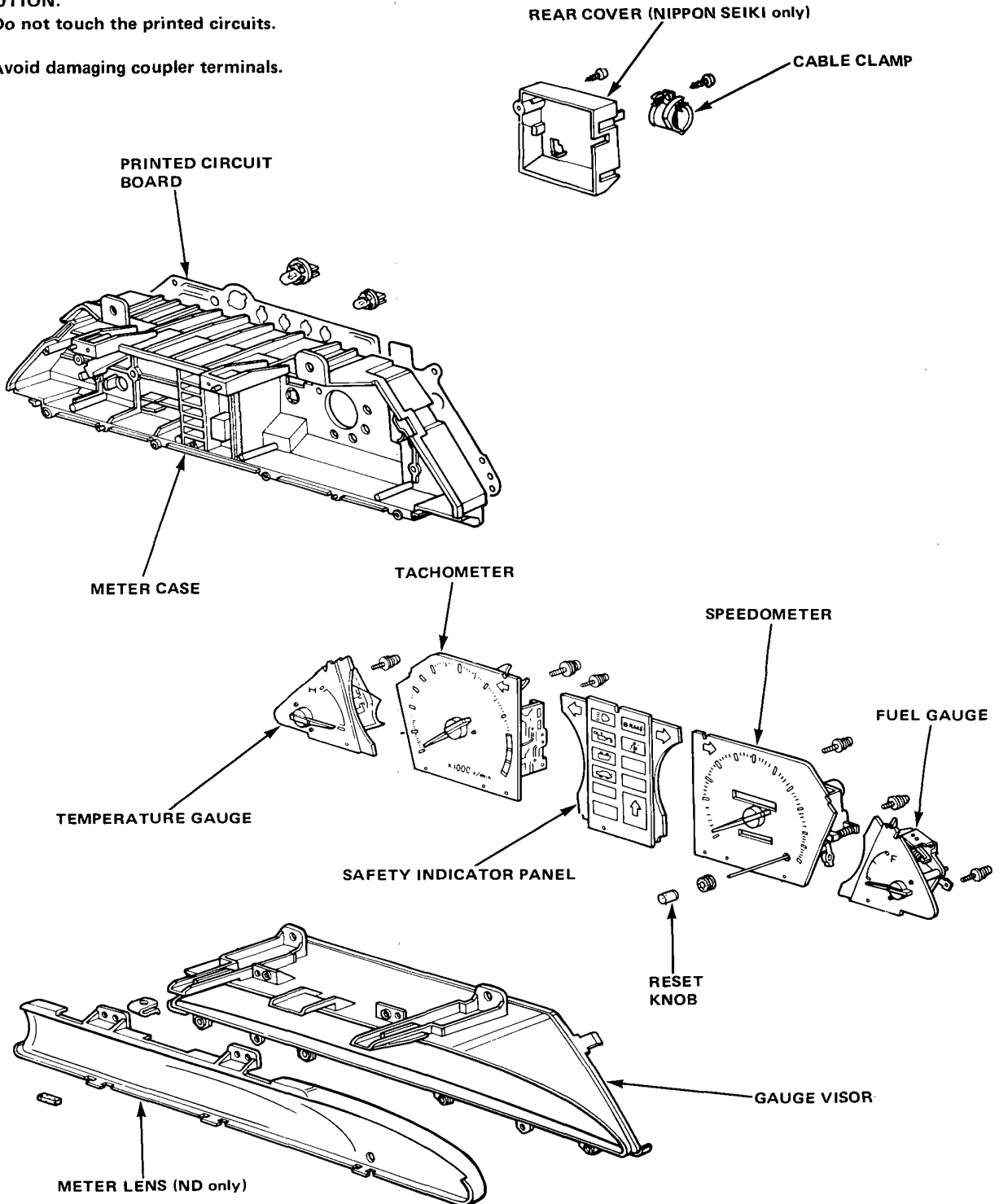


Gauges

Overhaul (Coupe)

CAUTION:

- Do not touch the printed circuits.
- Avoid damaging coupler terminals.

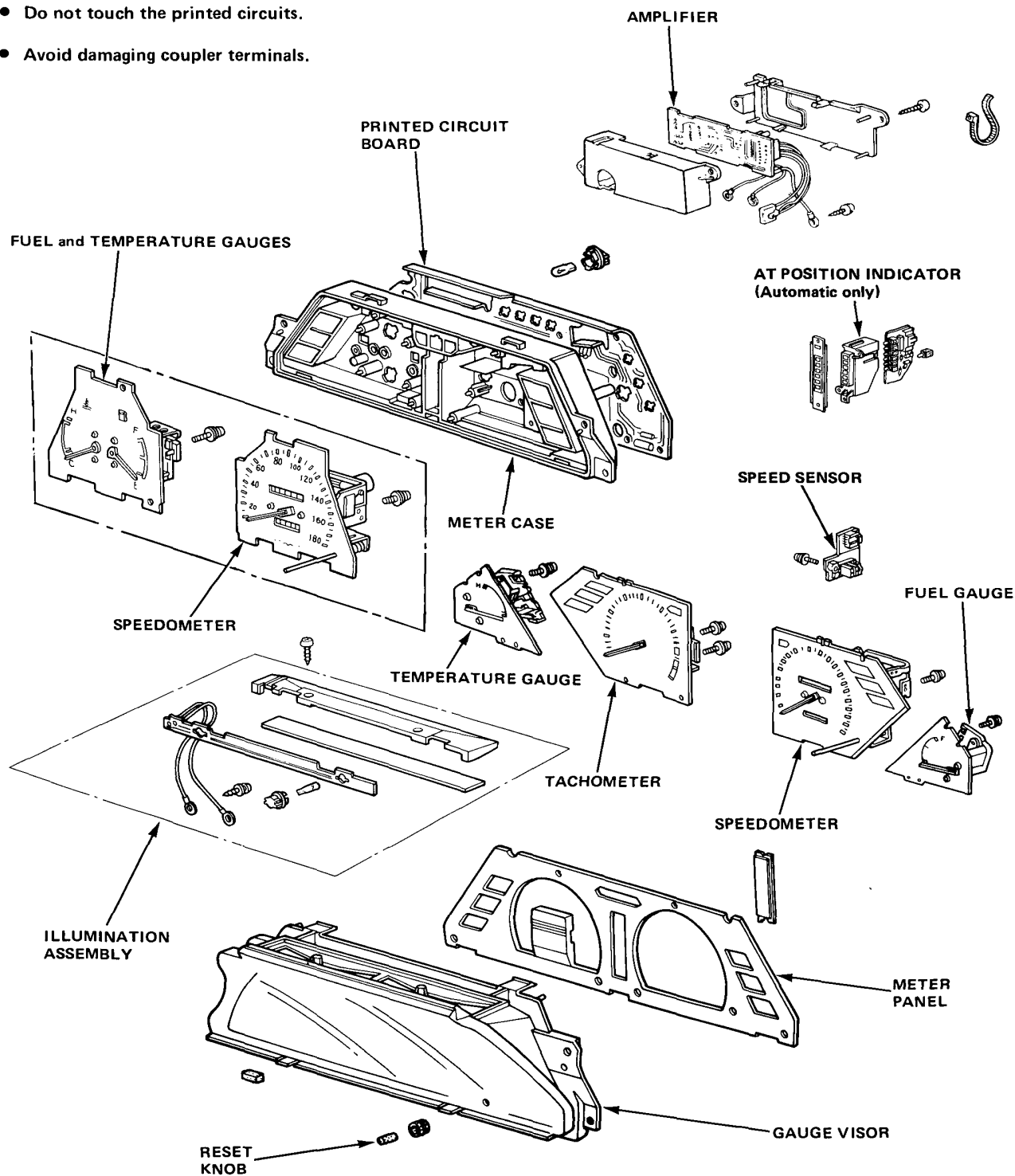




— (2D H/B and 4D)

CAUTION:

- Do not touch the printed circuits.
- Avoid damaging coupler terminals.



Gauges

Overhaul (4D H/B)

CAUTION:

- Do not touch the printed circuits.
- Avoid damaging coupler terminals.

